



HHE-60Lmini

HDMI EXTENDER
60M MINI



The HDMI extender provides an extension of HDMI signals long distances over a single CAT6 cable, it supports high resolutions up to 1080p, and EDID copy function. The extender can use for a wide range of applications requiring long-distance transmission of high resolution with high quality of its good stability and powerful security.

FEATURES :

- * Transmits HDMI video and audio signals up to 60M over a single CAT6 cable.
- * Support video resolution up to 1920*1080@60Hz, 3D signal.
- * Support copy EDID, can match many kinds of display device.
- * Compliance with HDMI 1.3 and HDCP 1.2 standard.
- * Support POC unilateral power supply.
- * High-compatibility, can auto-match source and display device.
- * Built-in automatic adjustment system, make the image smooth, clear and stable.
- * Simple to install, Plug and play.

PACKAGE CONTENTS :

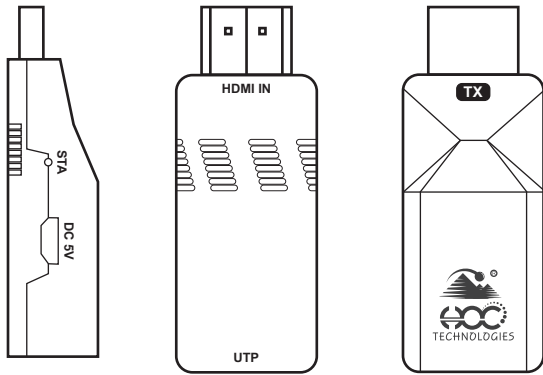
* HDMI Transmitter	1 Pc
* HDMI Receiver	1 Pc
* USB-A to Micro USB Cable	1 Pc
* Product Manual	1 Pc

SPECIFICATIONS :

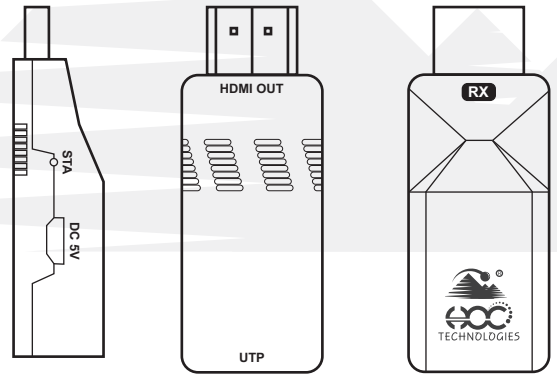
Brand		HOC
	Parameter	Description
Video	Standards	HDMI 1.3; HDCP 1.2
	Compressed format	H.264
	Maximum pixel clock	165MHz
	Maximum data rate	6.75Gbps
	Resolution	1920X1080P@60Hz
	Connector	HDMI-A
	Impedance	100Ω
Ethernet	Interface	RJ45
	Transmission Distance	CAT6-60M
OTHER	Power supply	The power adapter: DC 5V
	Power dissipation	MAX 3W
	Temperature	Operating: -5°C ~ +70°C
	Humidity	Operating: 5% ~ 90%
	Dimension	70*25*16mm
	The warranty	1 year free warranty

PANEL DESCRIPTION :

TRANSMITTING UNIT



RECEIVER UNIT



Item	Description
1	HDMI IN / HDMI OUT
2	CAT6
3	EDID
4	DC 5V
5	LED Indicator
6	PWR
7	STA

Item	Description
1	HDMI Signal Input / Output
2	RJ45 Port
3	EDID Copy button, Press 3 Second, Copy EDID form HDMI IN display device to system. If HDMI In interface no display connect, restore default EDID
4	Power Adapter Socket
5	Descriptio
6	System Power Indicator
7	System Power Indicator

CONNECT AND OPERATE :

1. Connect an HDMI cable between the HDMI input port of the transmitter and the HDMI output port of the video sources.
2. Connect the HDMI output port of the receiver to the display device with an HDMI cable.
3. Connect the transmitter UTP port to receiver UTP port using single CAT6 cable.
4. Connect the provided DC 5V power supply to the power socket of the transmitter or the receiver.
5. For the first time throw needs to confirm the work mode, 30M (1 to 30m) Cable, 60M (15 to 60m) Cables.
6. EDID buttons purposed such as connection after the launch of the PWR, STA indicator light, long PWR at the receiving and, the STA indicator light, long display no image or color, the transmitter power on the monitor of the HDMI port, and the transmitter HDMI port connection, long press EDID until the STA lights flashing, stop and restart the power, 1-5 steps can be repeated.

APPLICATION EXAMPLE :

